

Installing the MySQL ODBC Connector Windows XP and Windows 7

Roth Technologies, LLC

TABLE OF CONTENTS

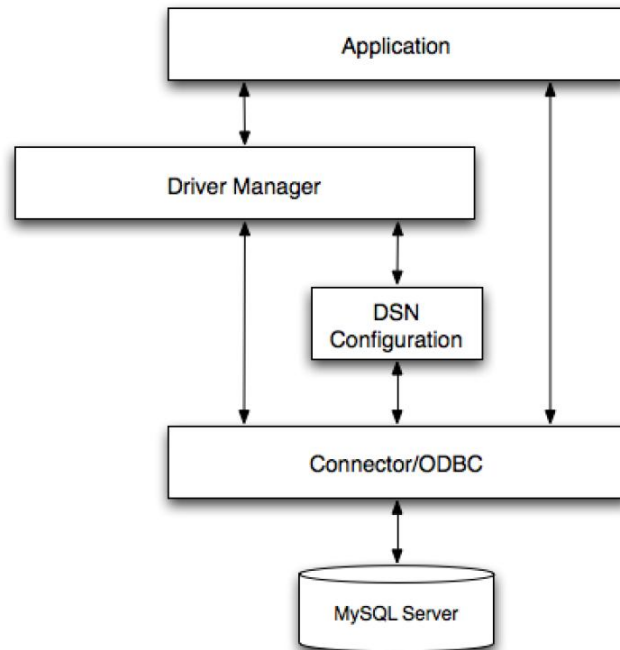
| | | |
|-------------|---|----------|
| I. | Introduction..... | 3 |
| II. | Obtaining the ODBC Driver..... | 4 |
| III. | Installing the ODBC Connector for MySQL | 4 |
| IV. | Installing the Windows Connector/ODBC Driver | 5 |
| V. | Resolving Installation Issues..... | 6 |

Installing and Creating a MySQL ODBC Connector on Windows

Copyright 2013 Roth Technologies, LLC

I. Introduction

ODBC Connector works as a standard gateway for applications to communicate with Database Servers with ease. The Materials Databases for CathRAD™ are located on a MySQL server connected to the Internet.



The use of a MySQL Server has the following advantages:

1. Fast data access
2. The databases can be properly maintained (not corrupted) and customized without recompiling the application
3. You (as the customer) can be assured that the materials data is proper. As part of the licensing fee for CathRAD™, our company assumes responsibility for maintenance of this database.

Installing and Creating a MySQL ODBC Connector on Windows

Copyright 2013 Roth Technologies, LLC

II. Obtaining the ODBC Driver

There are two public versions of MySQL Connectors, 3.51 and 5.1.

- a. If you are running Windows XP – you must install MySQL ODBC Connector V3.51, 32 bit version.

This driver can be obtained from the following link:

<http://dev.mysql.com/downloads/connector/odbc/3.51.html>

- b. If you are running Windows 7 – you must install MySQL ODBC Connector 5.1, 32 bit version, **not the 64 bit version**. This is true EVEN if you are running the 64 bit version of the Windows 7 operating system. CathCAD® was compiled using a 32 bit compiler so the use of the 32 bit MySQL ODBC driver is mandatory.

This driver can be obtained from the following link:

<http://dev.mysql.com/downloads/connector/odbc/5.1.html>

- c. Any other operating system is not supported at this time (Vista, Windows 98, Windows 95, etc). It is our expectation that Windows Vista will be supported shortly but Windows 95/98/ME will not be supported.

III. Installing the ODBC Connector for MySQL

The easiest way to install the MySQL ODBC Drivers on Windows is to use the MSI package. This procedure for downloading and installing is as follows:

1. Download the applicable driver using the links provided in this document
 - a. Select Microsoft Windows as the platform
 - b. Select Windows(x86, 32-bit) as the MSI Installer Connection-
2. Click Download
3. Click “No thanks, just take me to the downloads!” when the MySQL website ask you to register an account

Installing and Creating a MySQL ODBC Connector on Windows

Copyright 2013 Roth Technologies, LLC

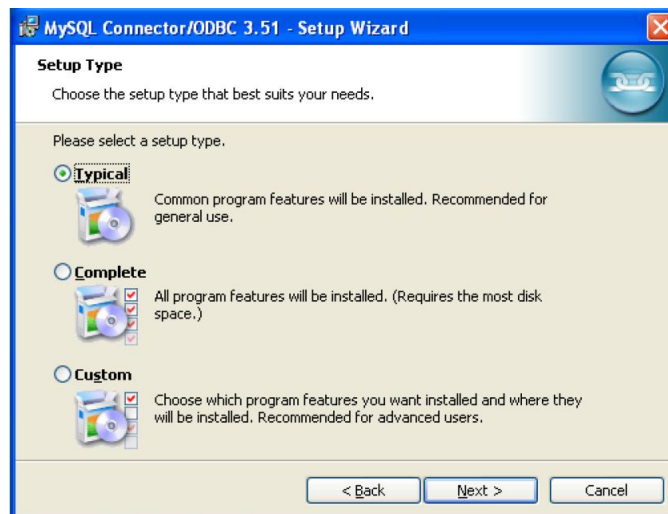
IV. Installing the Windows Connector/ODBC Driver

The following summarizes the actual installation of the ODBC driver onto your computer. Please note that you will require Administration privileges to complete this setup. For the purposes of this procedure, the screen shots show the ODBC 3.51 driver being installed. Installing the ODBC 5.1 driver for Windows 7 is exactly the same.

- a. Double click the standalone installer/MSI file you downloaded for Part II.
- b. The MySQL Connector/ODBC 3.51 or 5.1 Setup Wizard (as applicable) starts. Click the **NEXT** button to begin the installation process



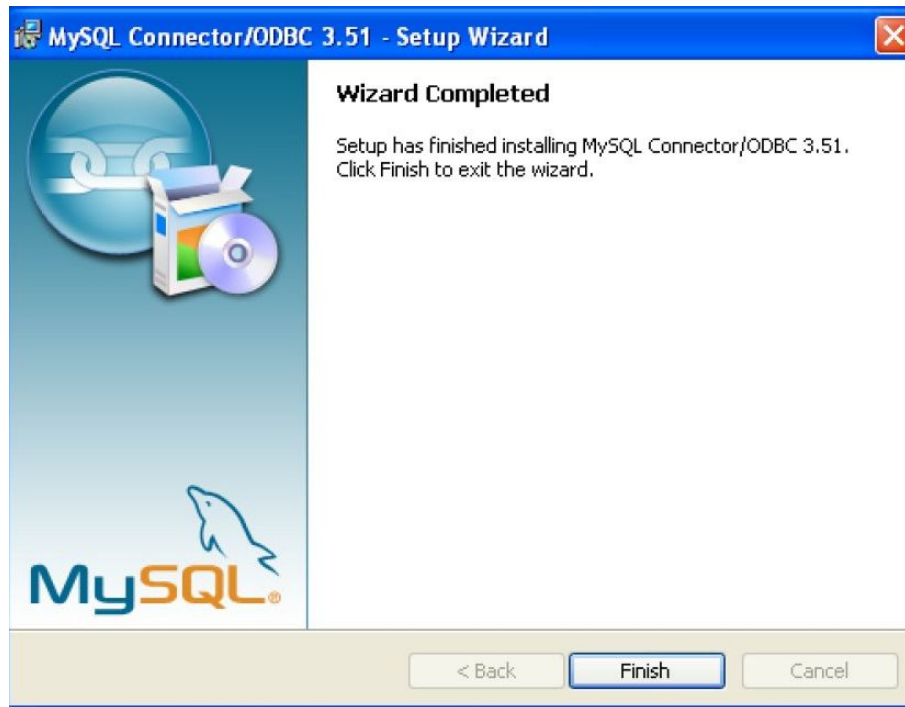
- c. Choose the **Typical Installation** type. The Typical Installation provides the standard files needed to connect to a MySQL database. Click **NEXT** to proceed to the next step.



Installing and Creating a MySQL ODBC Connector on Windows

Copyright 2013 Roth Technologies, LLC

- d. Once the files have been copied to your machine, the installation is complete. Click **FINISH** to exit the installer.



V. Resolving Installation Issues

Based on previous customer installation issues, two problems have been faced:

- First, the MySQL ODBC driver (32 bit version) was not installed. This installation guide should help you correct this issue.
- Second, the software requires that PORT 3306 is open on your gateway. Some large firms block this port. If you run into this issue, you will need to work with your I/S department to review and correct this issue.

If your installation fails and you are still stuck, contact us at sales@cathrad.com. Our alternate policy is to provide a fully loaded Dell computer with the software and ODBC driver loaded on it for a nominal (at cost) one time charge. This system works pretty well as we are able to load all software, drivers, etc on it and make sure that the system operates properly before shipping it to you.